

---

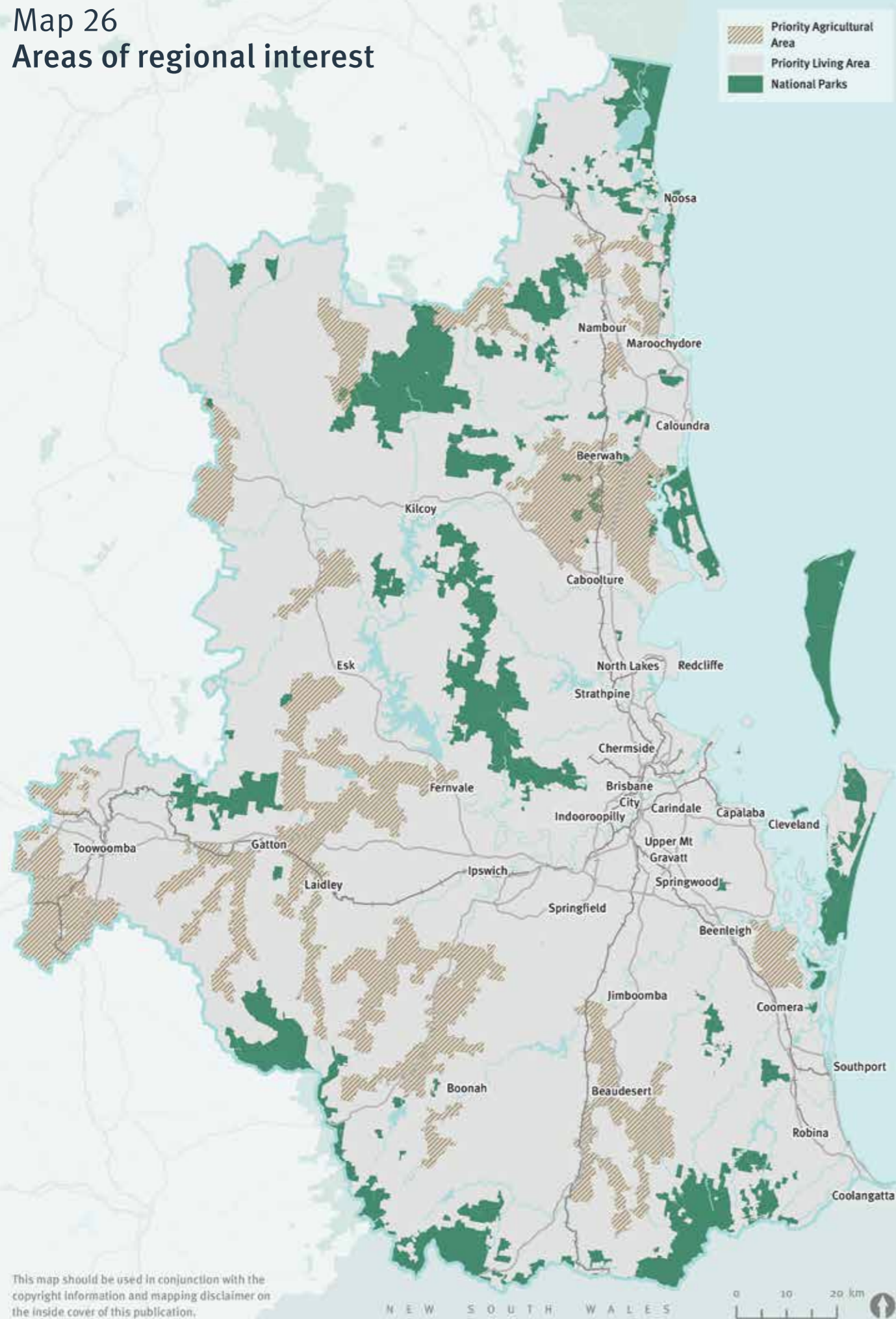
# RESOURCE ACTIVITY

---

**SEQ's mineral resources include coal, natural gas, metallic ores, industrial minerals and materials used in construction such as clay and dimension stone.**

There is prospectivity in SEQ for these minerals including critical minerals. Mining activities are undertaken according to the requirements of various resources legislation with the majority covered under the *Mineral Resources Act 1989*.

## Map 26 Areas of regional interest



This map should be used in conjunction with the copyright information and mapping disclaimer on the inside cover of this publication.

**The mining of clay and dimension stone in SEQ supports a thriving building and construction industry through the supply of bricks and stone products. These mines are generally small-scale and need to be located close to market in order for products to remain economical and to ensure supply.**

Local government planning schemes will continue to identify and protect identified mineral resource areas from inappropriate development. However, the planning and assessment of resource activities is not administrated under the Planning Act.

This chapter is relevant for the assessment of applications under the RPI Act for a regional interests development approval (RIDA). A RIDA may be required for resource activities or regulated activities proposed to occur within an area of regional interest.

For information on and guidelines relating to the RPI Act and applications associated with resource activities or regulated activities, see [www.planning.statedevelopment.qld.gov.au](http://www.planning.statedevelopment.qld.gov.au).

### Area of regional interest

ShapingSEQ identifies two areas of regional interest for SEQ: Priority Agricultural Areas (PAAs) and Priority Living Areas (PLAs). The region also contains areas that are mapped as part of the Strategic Cropping Area (SCA) as identified on the Strategic Cropping Land (SCL) trigger map, however, the SCA is mapped independently of the regional plan.

# Priority Agricultural Areas

## SEQ's well-established and highly productive agricultural areas support local markets and the regional economy.

The co-existence of agriculture and resources is important to the Queensland economy. However, the development of the resource sector at the expense of highly productive agricultural activities is not desirable within SEQ due to:

- » The limited extent and high productivity of agricultural land in SEQ.
- » The proximity of these highly productive agricultural activities to a large domestic market.
- » Good accessibility to transport and international markets.

PAA's (Map 26) have been identified in strategic clusters of the most regionally significant agricultural production areas which contain various priority agricultural land uses (PALUs). Any resource activity seeking to operate in these areas must demonstrate that it can co-exist with the PALUs without affecting their current or future ability to operate.

In SEQ, a PALU means a land use included in the following classes under the Australian Land Use and Management Classification Version 7, May 2010 published by the Department of Agriculture, Fisheries and Forestry ABARES, Australian Government:

- » 3.1 Plantation forestry
- » 3.3 Cropping
- » 3.4 Perennial horticulture
- » 3.5 Seasonal horticulture
- » 4 Production from irrigated agriculture and plantations
- » 5.1 Intensive horticulture
- » 5.2 Intensive animal husbandry.

The regional outcome and associated policies below seek to address potential conflicts between existing agricultural land uses within SEQ and opportunities in the resource sector.

### Regional outcome

SEQ's agricultural sector continues to grow with certainty and investor confidence.

### Regional policies

- Protect priority agricultural land uses within the PAA.
- Ensure the continuation and growth of agricultural sector production in the PAA is not adversely constrained by resource activities.



# Priority Living Area

**SEQ is a complex, integrated region and the most densely populated part of the state. The region contains about 71 per cent of Queensland's population in only 1.3 per cent of its area.**

The region's population is concentrated in several major urban areas, with surrounding hinterland areas also containing a relatively dense network of towns, villages, rural residential areas and small rural communities.

SEQ's communities depend on the natural systems and regional and rural landscapes to contribute to the region's liveability, health, lifestyle and economy.

As settlements in SEQ expand, planning for growth and change in the region must provide opportunities for productive, happy, healthy and meaningful lives for individuals and communities. Areas that contain rural production, major biodiversity and conservation areas, regional landscapes, waterways and beaches, agriculture, natural economic resources, and tourism and recreation opportunities must be considered holistically to ensure the success of the region.

The entire SEQ region has been identified as a PLA (Map 26) in recognition of SEQ's unique context of containing the state's pre-eminent urban settlements, as well as:

- » Major water storage infrastructure and associated water catchments.

- » A range of formal and informal sporting, recreational and community activities that are vital to the region's health and viability.
- » A surrounding rural hinterland that provides:
  - » attractive and accessible natural environments and public open space with areas of high scenic amenity including important views and vistas.
  - » opportunities for public access and use of natural areas and public open space that is functional, accessible and connected.

There is an opportunity for small scale mining of construction materials, such as clay and dimension stone, to support the region's building and construction industry. These mines have reduced environmental impacts and need to be located close to market in order for products to remain economical and to ensure supply. These mines can be accommodated in SEQ if community expectations within the PLA can be met.

The regional outcome and associated policies below seek to ensure the region's communities can connect to their social and physical environments, both constructed and natural, and support their social needs without unreasonable conflicts with the resource sector.

### Regional outcome

The growth potential of SEQ settlements, population-supporting assets and amenity are protected and prioritised over resource activities.

### Regional policies

- Safeguard areas required for the long-term growth of SEQ communities from the irreversible impacts of resource activities in the PLA.
- Protect water storage infrastructure and the integrity and functionality of associated water catchments in the PLA.
- Protect the regional and rural landscape amenity of the PLA from material impacts of resource activities.