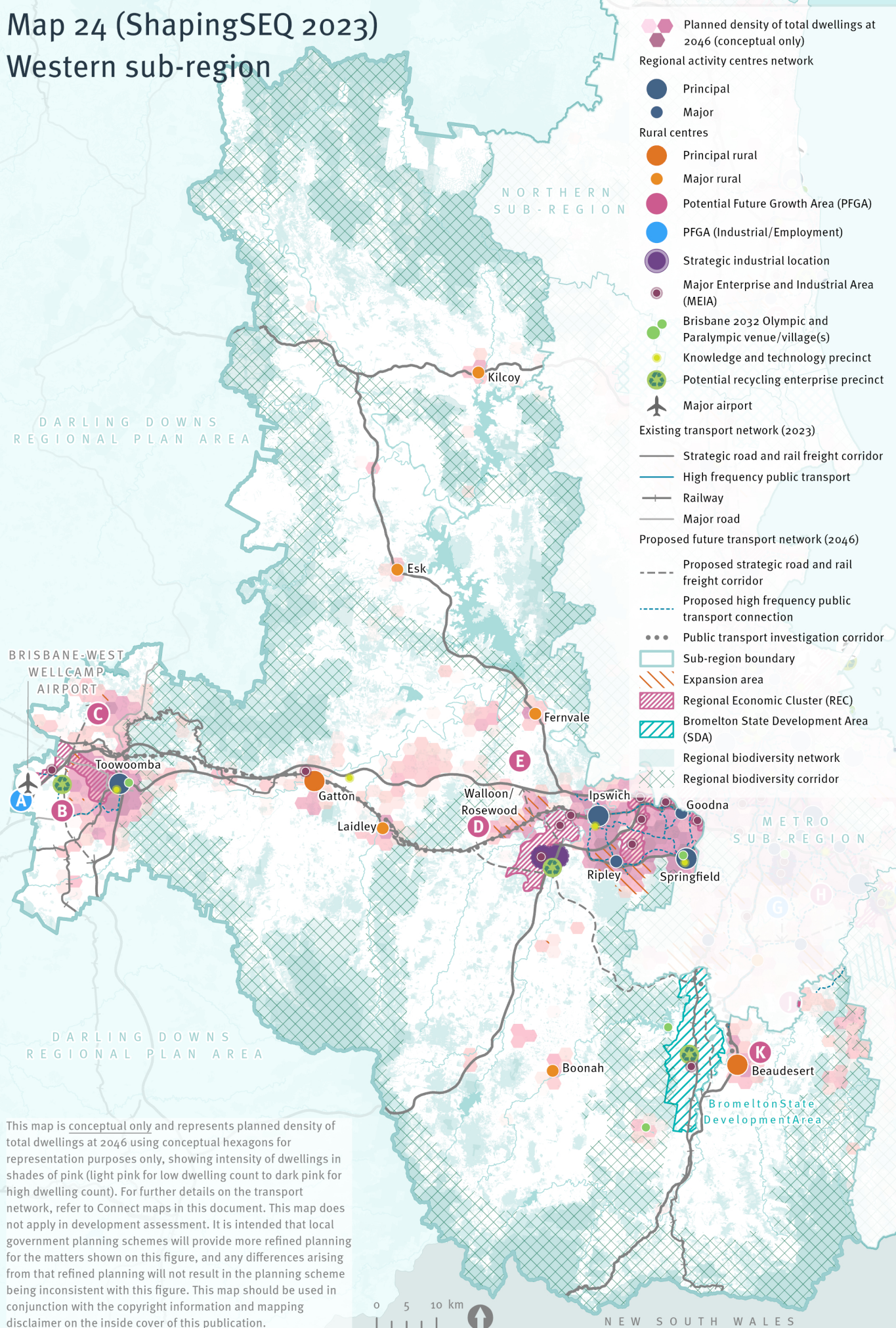
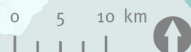


Map 24 (ShapingSEQ 2023)

Western sub-region



This map is conceptual only and represents planned density of total dwellings at 2046 using conceptual hexagons for representation purposes only, showing intensity of dwellings in shades of pink (light pink for low dwelling count to dark pink for high dwelling count). For further details on the transport network, refer to Connect maps in this document. This map does not apply in development assessment. It is intended that local government planning schemes will provide more refined planning for the matters shown on this figure, and any differences arising from that refined planning will not result in the planning scheme being inconsistent with this figure. This map should be used in conjunction with the copyright information and mapping disclaimer on the inside cover of this publication.



NEW SOUTH WALES